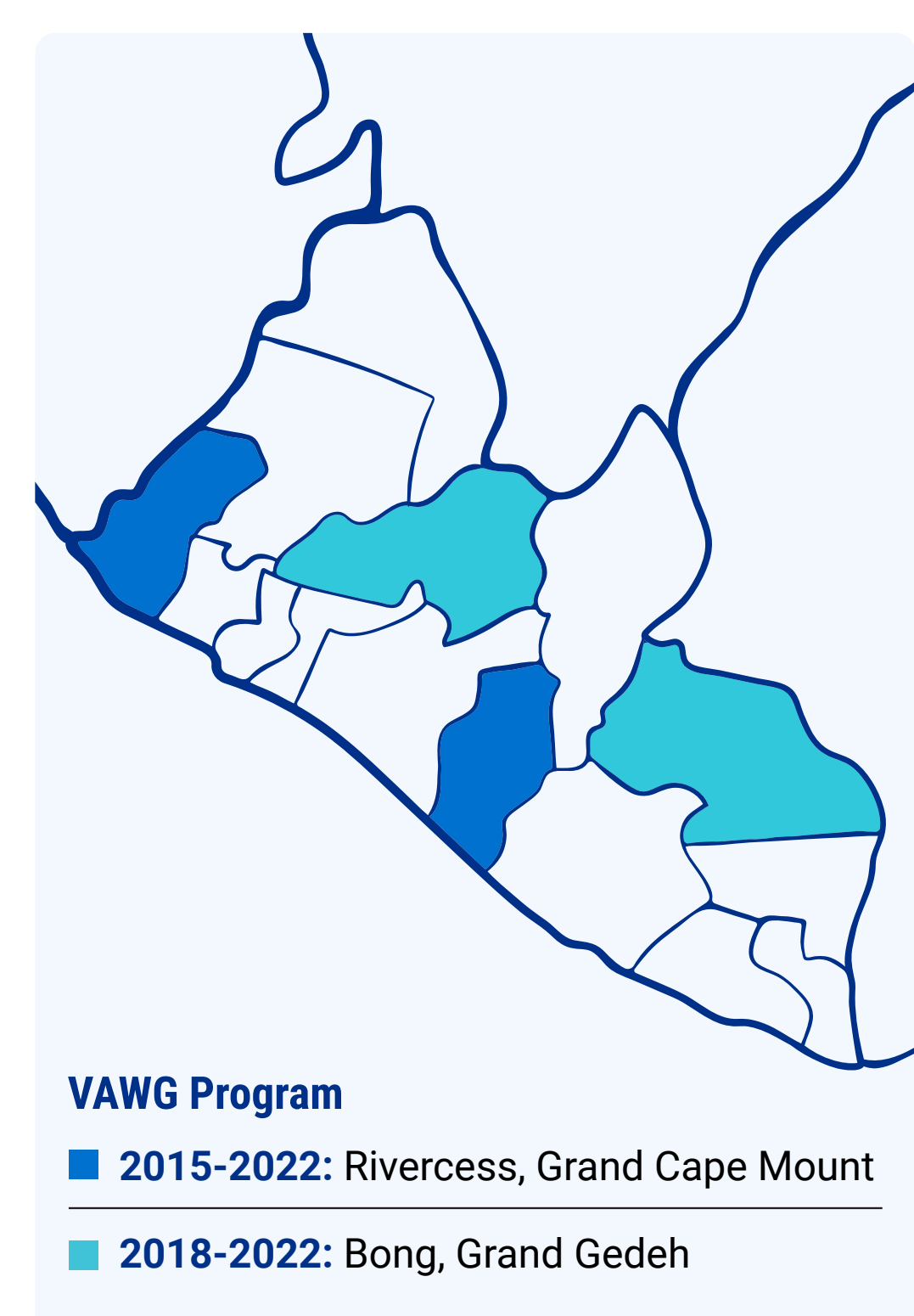
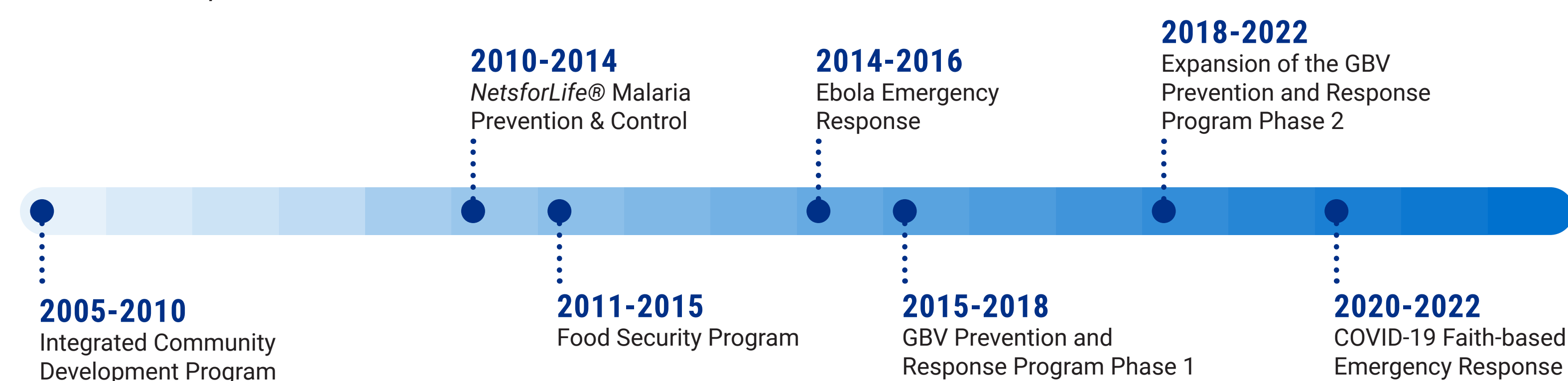


Scaling Up Faith and Youth Leaders' Engagement to Prevent and Respond to Violence Against Women and Girls in Liberia



1 Ending Violence Against Women and Girls (VAWG) Program

Evolution of the program and the partnership between Episcopal Church of Liberia Relief & Development and Episcopal Relief & Development



Since 2015 the Episcopal Church of Liberia Relief & Development, in partnership with Episcopal Relief & Development have been Scaling Up Faith Leaders' Engagement to Prevent and Respond to VAWG. The program mobilizes and equips faith and community leaders with the skills and tools to engage their communities using a social and behavior change (SBC) approach for reducing VAWG.

The program's SBC approach recognizes the influence and role of religion and culture in maintaining and changing social norms, and individual behaviors. It also invests in the leadership of young people, recognizing their specific vulnerabilities to GBV, as well as the unique contribution that their voices, agency and resilience can bring to activism for gender equality and the transformation of communities.

PROGRAM GOALS

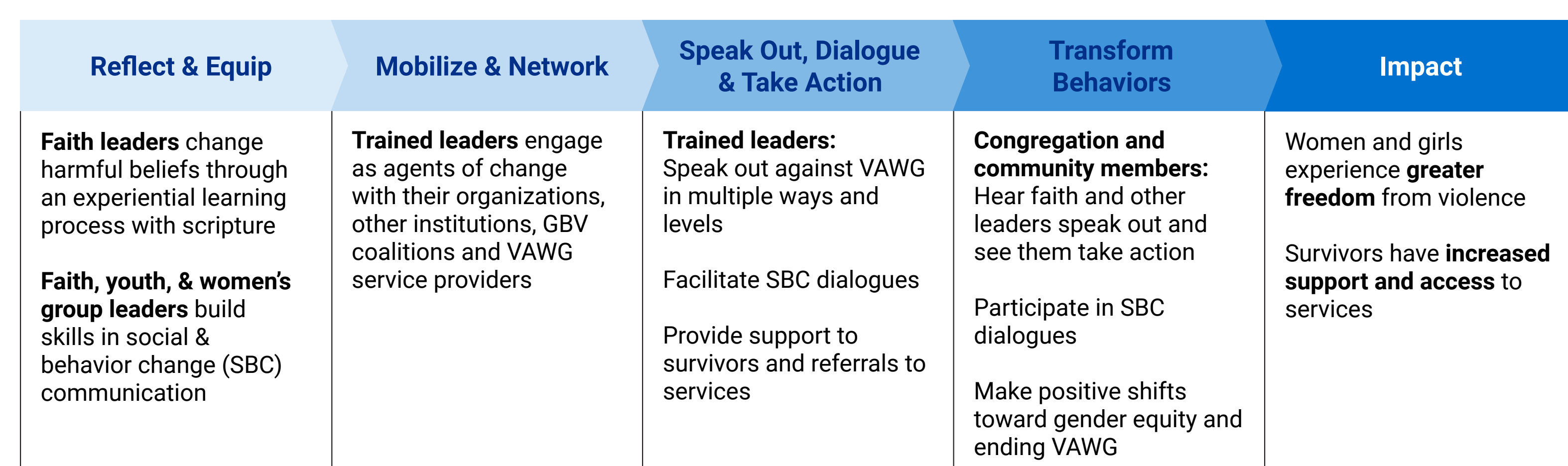


Women and girls experience less intimate partner violence and non-partner sexual violence.



Women and girl survivors of violence have increased support and access to VAWG services.

2 Theory of Change



3 Transformation and Experiential Learning



"Before this program, I couldn't tell a man that beating his wife was wrong. Today, I teach my male congregants to show love and kindness to their wives and to treat them with respect. Other faith leaders whom I have trained are also telling their congregants that it is not good to beat their wives."

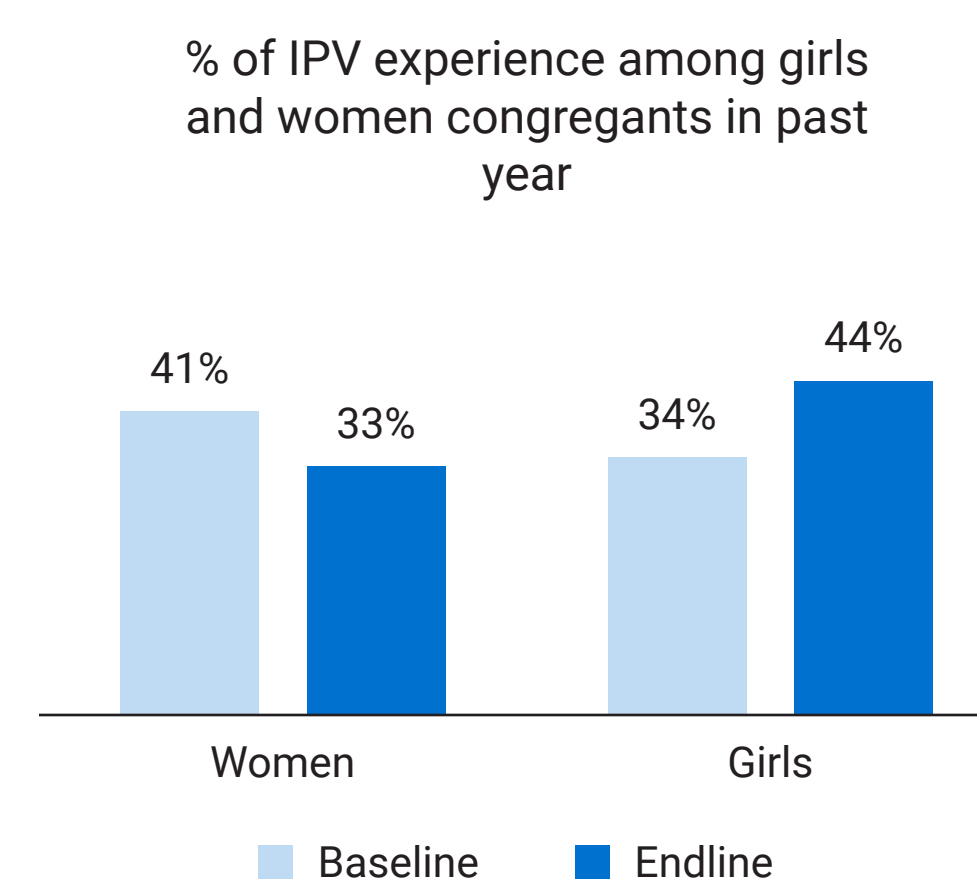
Christian Faith Leader

"This program brought Muslims and Christians together. It enhances religious tolerance in our communities... I had never entered a church prior to the program. Today I go to church services and interact with pastors and priests. They also enter our Mosques and deliver messages to our congregation. We come together on GBV-related issues and work with respect for each other's beliefs."

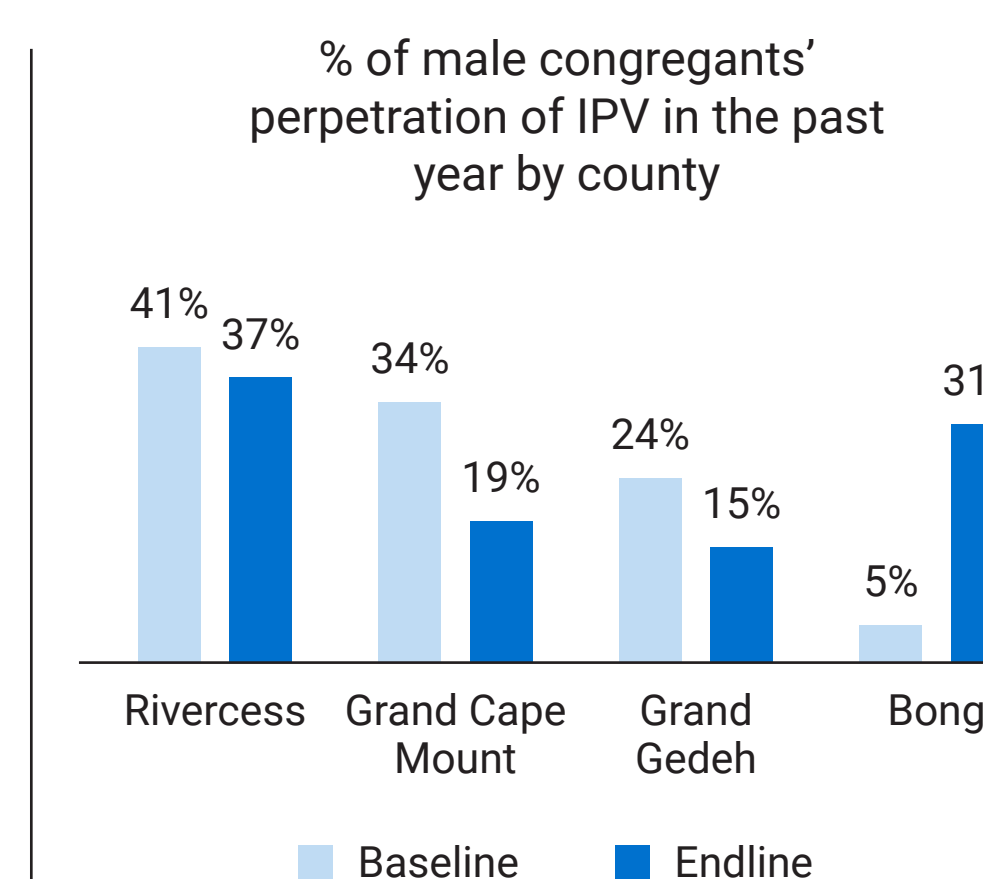
Muslim Faith Leader

4 Key Results

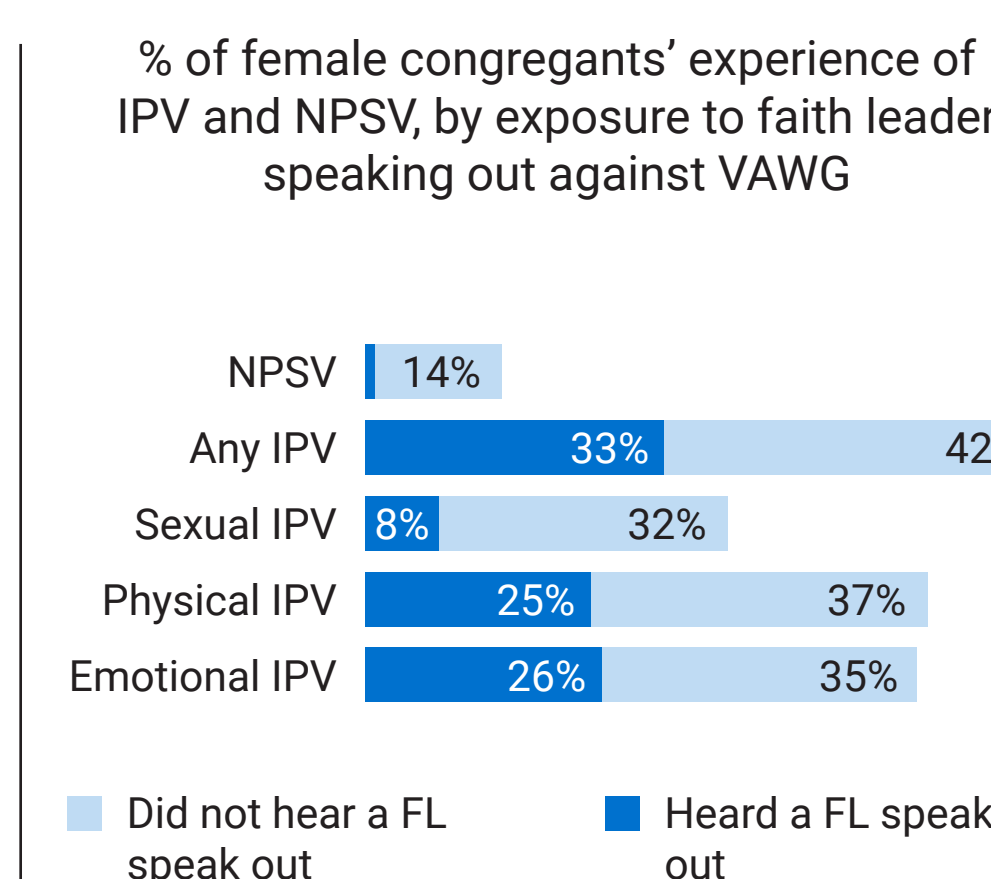
Goal 1: Women and girls experience less intimate partner violence and non-partner sexual violence.



Intimate partner violence reduced for women, but not for girls

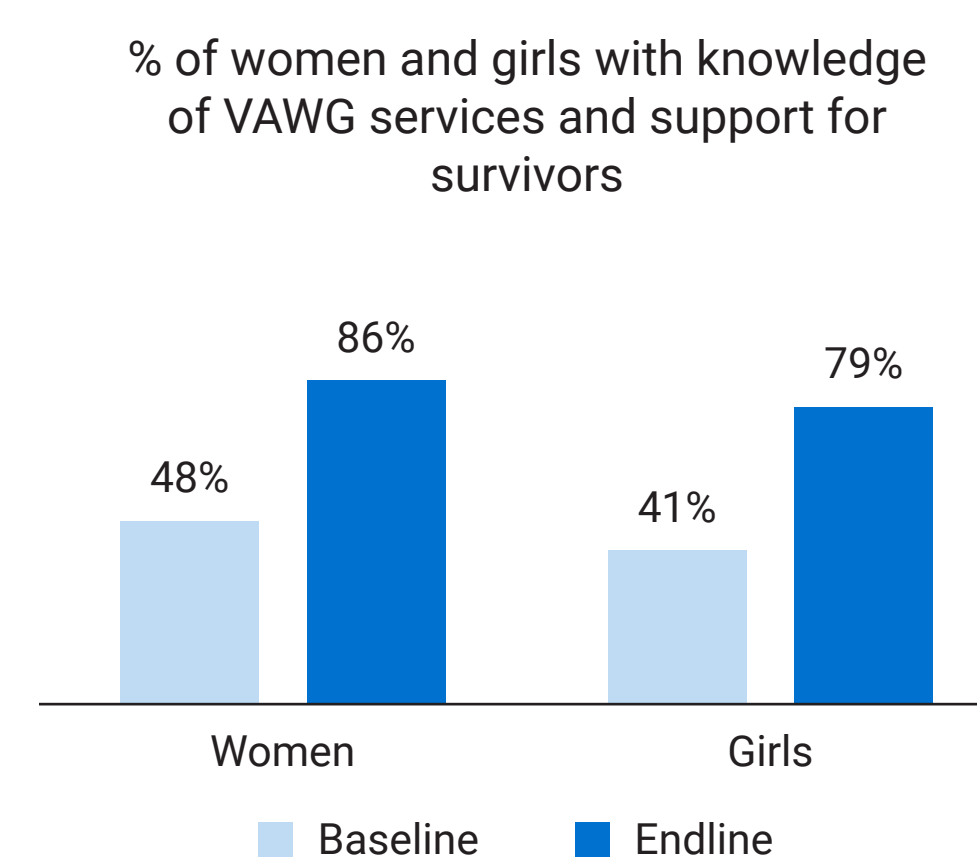


Male congregants' perpetration of IPV decreased in 3 of 4 counties

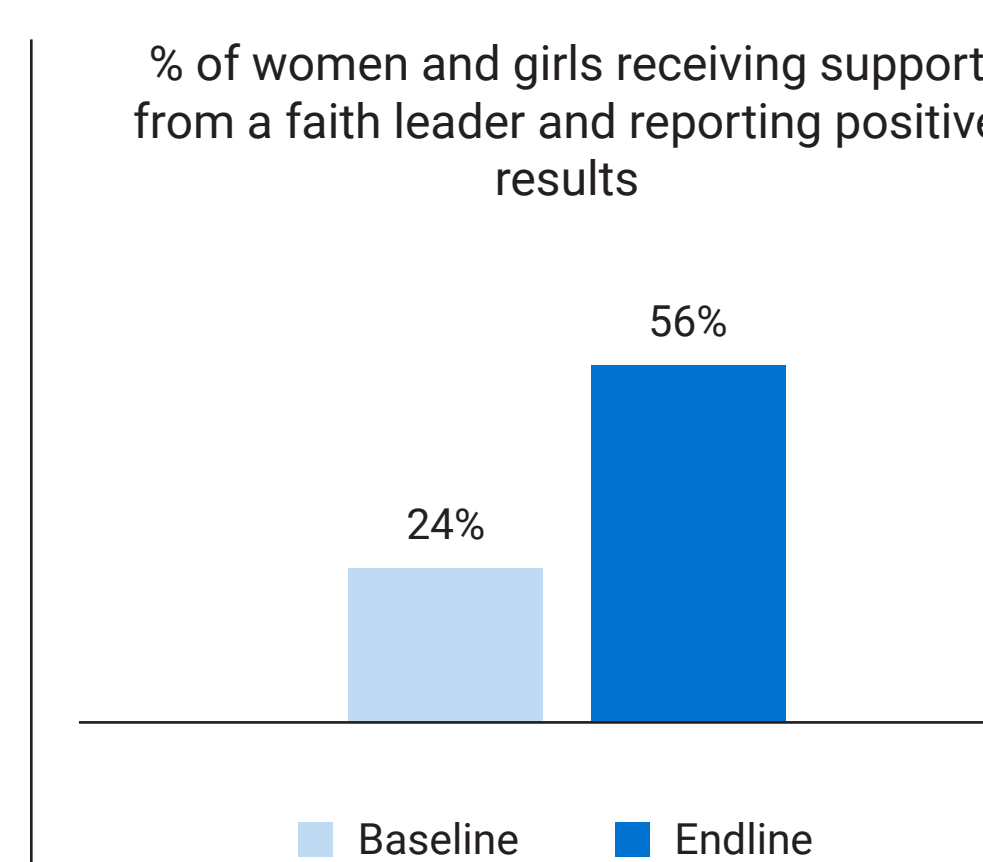


Women and girl congregants who heard faith leaders speak out against VAWG experienced less violence than those who did not

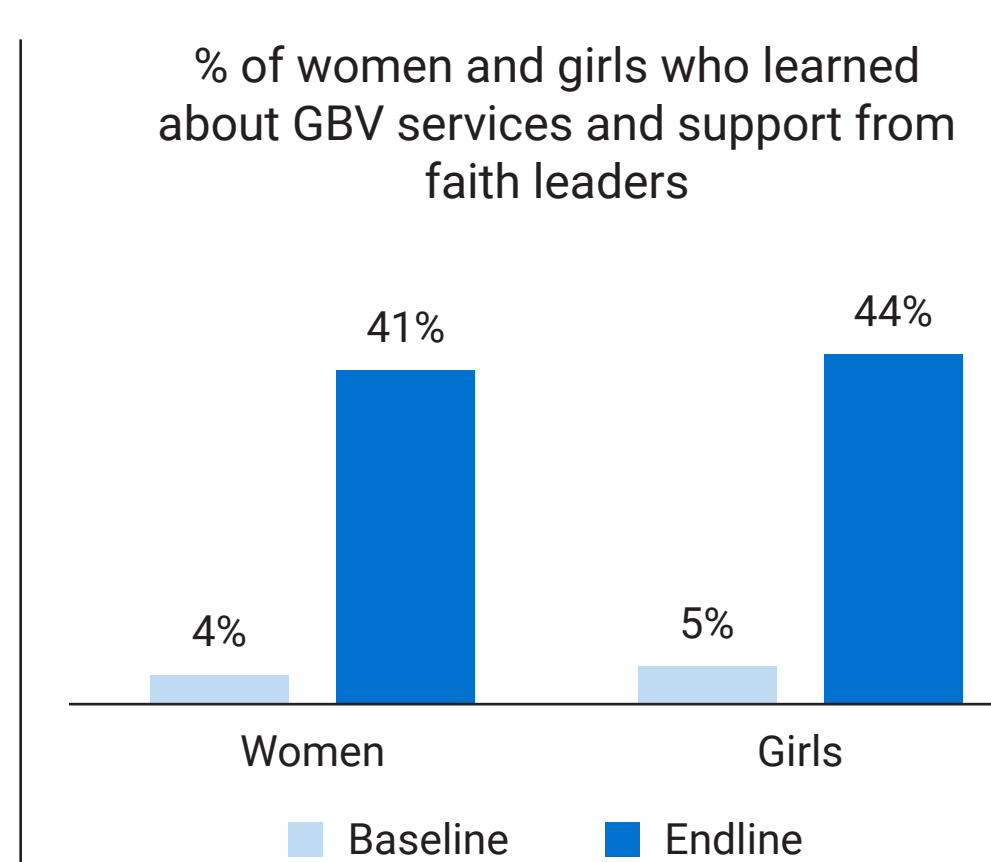
Goal 2: Women and girl survivors of violence have increased support and access to VAWG services.



More women and girls are knowledgeable about services and support available to survivors



More women and girls received support from a faith leader and had positive results



Faith leaders played an important role in increasing knowledge of services and support to survivors

Results are from the Comprehensive Endline Evaluation Report of 2018-2022 VAWG Program in Liberia, conducted independently by Dr. Elisabet le Roux of Stellenbosch University and Dr. Julienne Corboz.

KNOWLEDGE EXCHANGE AND DIALOGUE

How can we support survivors of intimate partner violence?

What initiatives would you recommend to reduce VAWG for girls specifically?

How can technology be used to improve communication flow so that service providers know how and where to refer survivors when they seek assistance?

What tools have proved to be effective for fostering adolescents and youth participation and decision-making into VAWG programming?

5 Impact of COVID-19 on Women and Girls

Incidences of gender based violence rose in Liberia during the pandemic. ECLRD conducted a rapid gender analysis during the emergency to investigate the impact of COVID-19 on women and girls and found that the pandemic:

- Widened the gender poverty gap
- Disrupted education
- Reduced access to health services
- Increased incidences of GBV and IPV

In response, the program adapted by:

- Mobilizing and equipping faith leaders to meet basic needs and offer spiritual care to survivors
- Strengthening the capacity of partner organizations to manage and reduce disaster risk and build community resilience
- Strengthening savings and loans groups and providing non-conditional cash transfers
- Targeting support to the most vulnerable, including survivors with disabilities